

LIVERMORES

THE ESTATE AGENTS

3 Bedrooms

House - Semi-Detached

Asking Price

£450,000

Located in

Dartford



www.livermores.co.uk



152 Chastilian Road

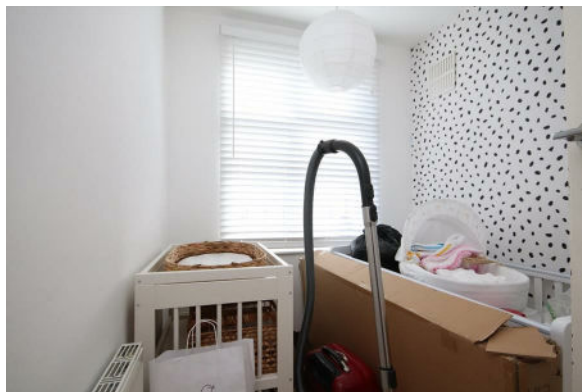
Dartford Kent DA1 3LQ



WEST DARTFORD * GRAMMAR SCHOOL CATCHMENT * EXTENDED
SEMI DETACHED FAMILY HOME * 3 BEDROOMS * THROUGH LOUNGE *
KITCHEN/DINER * UTILITY ROOM * FIRST FLOOR BATHROOM * OFF
ROAD PARKING * REAR GARDEN * POPULAR RESIDENTIAL ROAD *
DOUBLE GLAZING * GAS CENTRAL HEATING * VIEWING HIGHLY
RECOMMENDED

152 Chastilian Road

£450,000 Freehold

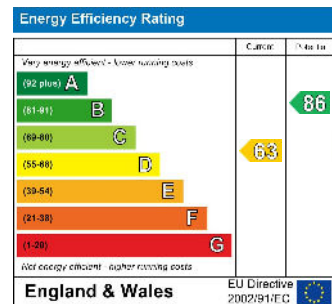


- WEST DARTFORD
- CLOSE TO GRAMMAR SCHOOLS
- KITCHEN/DINER
- THROUGH LOUNGE
- SIMILAR PROPERTIES REQUIRED
- NO CHAIN
- 3 BEDROOM SEMI DETACHED
- FIRST FLOOR BATHROOM
- OFF ROAD PARKING
- EPC RATING 'D' COUNCIL TAX BAND D

Council Tax Band D

Local Authority Dartford Borough Council

Agents Note: Whilst every care has been taken to prepare these particulars, they are for guidance purposes only. All measurements are approximate and are for general guidance purposes only and whilst every care has been taken to ensure their accuracy, they should not be relied upon and potential buyers/tenants are advised to recheck the measurements.



1 Hythe Street
Dartford
Kent
DA1 1BE



dartford@livermores.co.uk

01322 228090

www.company.co.uk