



**LIVERMORES**  
THE ESTATE AGENTS

3 Bedrooms

House - Terraced

Located in Dartford

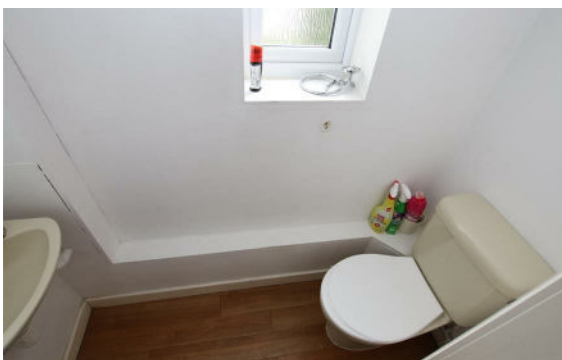
£1,350 PCM



[lettings@livermores.co.uk](mailto:lettings@livermores.co.uk)

[www.livermores.co.uk](http://www.livermores.co.uk)

01322 311427



**LIVERMORES**  
THE ESTATE AGENTS

1 Hythe Street  
Dartford  
Kent  
DA1 1BE

01322 311427

[lettings@livermores.co.uk](mailto:lettings@livermores.co.uk)

[www.livermores.co.uk](http://www.livermores.co.uk)

We are pleased to offer this 3 bedroom family home which is located in a quiet location within easy access of Dartford town centre. The part furnished accommodation comprises Entrance Hall, Lounge, Fitted Kitchen, 3 Bedrooms and Bathroom. There is a garden to the rear and one allocated parking space to the front. EPC rating 'D'. Council tax band 'E'. Available from 30th October 2018.

### Energy Efficiency Rating:

Agents Note: Whilst every care has been taken to prepare these particulars, they are for guidance purposes only. All measurements are approximate and are for general guidance purposes only and whilst every care has been taken to ensure their accuracy, they should not be relied upon and potential buyers/tenants are advised to recheck the measurements.