

LIVERMORES

THE ESTATE AGENTS

1 Bedrooms

Apartment

Per Month

£1,100 Per
Month

Located in

Greenhithe



www.livermores.co.uk



11 Winston Close

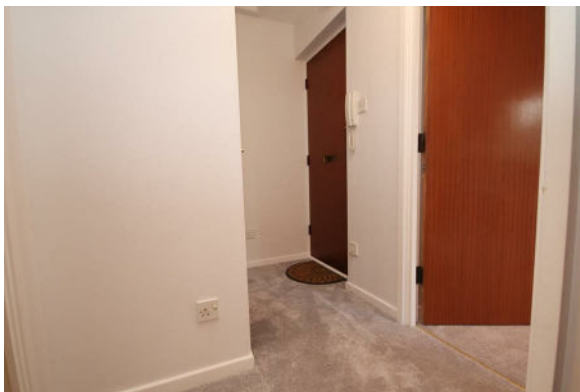
Greenhithe Kent DA9 9DG



* BEAUTIFULLY PRESENTED TOP FLOOR (2ND) APARTMENT *
* SPACIOUS LOUNGE WITH JULIETTE BALCONY * DOUBLE BEDROOM *
* FITTED KITCHEN * BATHROOM * ALLOCATED PARKING BAY *
* LOCATED WITHIN 1 MILE OF GREENHITHE MAINLINE STATION * NEW
* CARPET THROUGHOUT * RECENTLY REDECORATED * VIEWING
* HIGHLY RECOMMENDED* AVAILABLE IMMEDIATELY* DEPOSIT
£1269.23

11 Winston Close

£1,100 Per Month

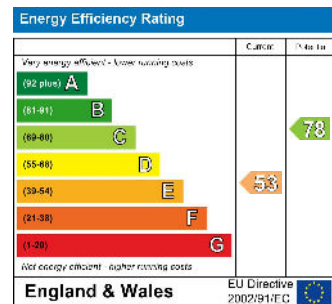


- DOUBLE BEDROOM
- NEW CARPETS
- EPC RATING 'E'
- FITTED KITCHEN
- DEPOSIT £1153.84
- SPACIOUS LOUNGE
- JULIETTE BALCONY
- COUNCIL TAX BAND 'B'
- ALLOCATED PARKING SPACE
- SIMILAR PROPERTIES REQUIRED

Council Tax Band E

Local Authority Dartford Borough Council

Agents Note: Whilst every care has been taken to prepare these particulars, they are for guidance purposes only. All measurements are approximate and are for general guidance purposes only and whilst every care has been taken to ensure their accuracy, they should not be relied upon and potential buyers/tenants are advised to recheck the measurements.



1 Hythe Street

Dartford

Kent

DA1 1BE



dartford@livermores.co.uk

01322 228090

www.company.co.uk