

LIVERMORES

THE ESTATE AGENTS

1 Bedrooms

House - Semi-Detached

Guide Price

£250,000

Located in

Dartford



www.livermores.co.uk



61 Blackmans Close

Dartford Kent DA1 2QJ



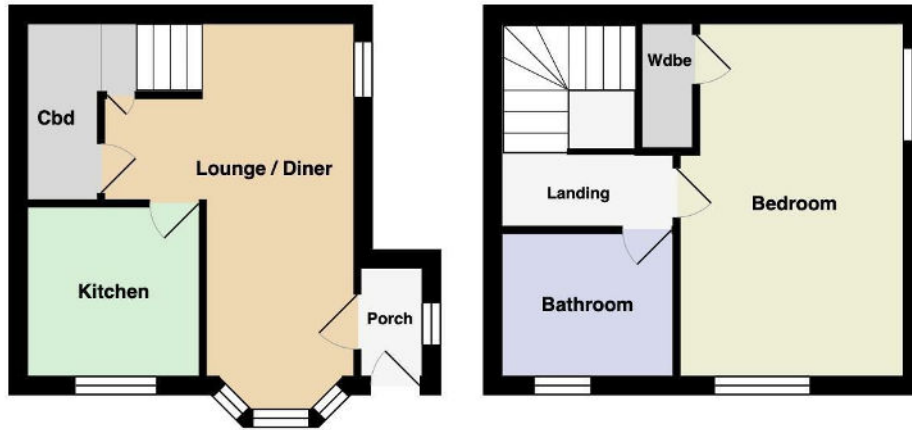
GUIDE PRICE £250,000 TO £275,000 * WEST DARTFORD * FREEHOLD
HOUSE * OWN GARDEN * 1 BEDROOM * SET OVER 2 FLOORS * CUL DE
SAC * GOOD LOCATION FOR SCHOOLS * APPROXIMATELY 1 MILE TO
DARTFORD MAINLINE STATION * FANTASTIC FIRST TIME BUY *
ALLOCATED PARKING BAY * VIEWING HIGHLY RECOMMENDED

61 Blackmans Close

£250,000 Freehold



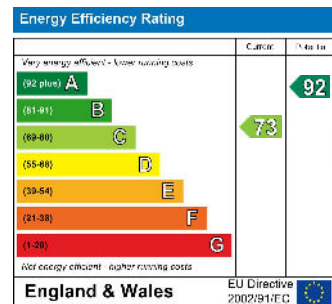
- WEST DARTFORD
- CUL DE SAC LOCATION
- 1 BEDROOM
- OWN GARDEN
- SIMILAR PROPERTIES REQUIRED
- ALLOCATED PARKING BAY
- FREEHOLD HOUSE
- SET OVER 2 FLOORS
- HALF A MILE TO THE GRAMMAR SCHOOLS
- EPC RATING 'C' COUNCIL TAX BAND 'B'



Council Tax Band B

Local Authority Dartford Borough Council

Agents Note: Whilst every care has been taken to prepare these particulars, they are for guidance purposes only. All measurements are approximate and are for general guidance purposes only and whilst every care has been taken to ensure their accuracy, they should not be relied upon and potential buyers/tenants are advised to recheck the measurements.



1 Hythe Street
 Dartford
 Kent
 DA1 1BE



dartford@livermores.co.uk
 01322 228090
 www.company.co.uk