



LIVERMORES
THE ESTATE AGENTS

1 Bedrooms
House - End Terrace
Located in Dartford

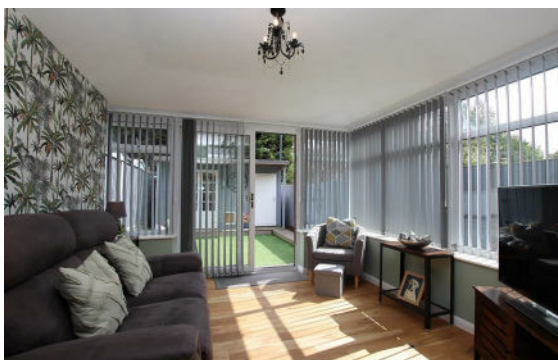
£275,000



dartford@livermores.co.uk

www.livermores.co.uk

01322 228090



1 Hythe Street
Dartford
Kent
DA1 1BE

01322 228090

dartford@livermores.co.uk

www.livermores.co.uk

Price Guide £275,000 to £300,000. Prepare to be pleasantly surprised as you enter this unusually spacious one bedroom end of terrace house situated on a small, popular development within easy vehicular access to the A2/M25 road intersections and Bluewater. Upon entering this exceptionally well presented property, the open-plan design gives the impression of a much larger home and we expect you will be immediately impressed with the quality and finish throughout. The accommodation comprises lounge/living area, conservatory, ground floor cloakroom, one double bedroom and a spacious en-suite bathroom. Apart from the excellent presentation, features to note include, double glazing, gas central heating, air-conditioning, off road parking to front for TWO VEHICLES and IMMEDIATE VACANT POSSESSION. We can highly recommend an internal inspection to fully appreciate this wonderful home which would be ideal a first time purchase, downsizing or investor. HIGHLY RECOMMENDED.

Energy Efficiency Rating: C

Agents Note: Whilst every care has been taken to prepare these particulars, they are for guidance purposes only. All measurements are approximate and are for general guidance purposes only and whilst every care has been taken to ensure their accuracy, they should not be relied upon and potential buyers/tenants are advised to recheck the measurements.