

# LIVERMORES

THE ESTATE AGENTS

1 Bedrooms

Apartment

Price Guide

£280,000

Located in

Dartford



[www.livermores.co.uk](http://www.livermores.co.uk)



# 29 Keyes Lodge King Edward

Dartford Kent DA1 2FH



GUIDE PRICE £280,000 TO £300,000 \* BEAUTIFULLY PRESENTED 1  
BEDROOM 1ST FLOOR APARTMENT \* RETIREMENT LIVING FOR OVER 55's  
\* 710 SQUARE FEET \* LARGE DOUBLE BEDROOM WITH WALK IN  
WARDROBE \* SPACIOUS LOUNGE/DINER \* JULIETTE BALCONY WITH  
VIEWS OF THE COMMUNAL GARDENS \* MODERN KITCHEN WITH  
INTEGRATED APPLIANCES \* LOVELY SHOWER ROOM \* FANTASTIC  
COMMUNAL LOUNGE WITH TEA AND COFFEE MAKING FACILITIES \*  
LONG LEASE 118 YEARS \* LIFT \* PARKING (NOT ALLOCATED) \* WARDEN  
ASSISTED \* WELL MAINTAINED COMMUNAL GARDENS \* VIEWING  
HIGHLY RECOMMENDED \*



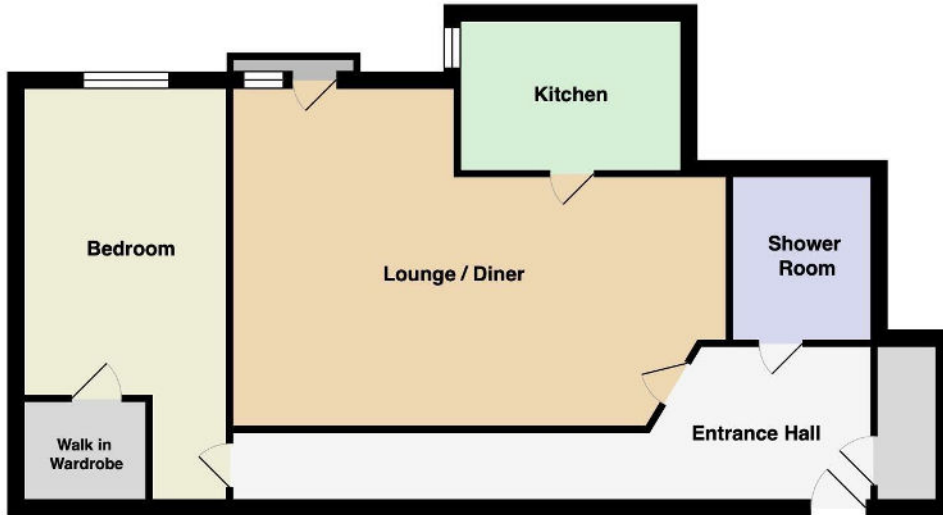
# 29 Keys Lodge King Edward

£280,000 Leasehold



- GUIDE PRICE £280,000 TO £300,000
- BEAUTIFUL 1 BEDROOM FIRST FLOOR APARTMENT
- RETIREMENT LIVING OVER 55'S ONLY
- SPACIOUS LOUNGE/DINER
- LARGE BEDROOM WITH WALK IN WARDROBE
- JULIETTE BALCONY WITH VIEWS OF THE GARDENS
- MODERN KITCHEN WITH INTEGRATED APPLIANCES
- NO CHAIN
- SIMILAR PROPERTIES REQUIRED
- EPC RATING 'B' COUNCIL TAX BAND 'C'





## Council Tax Band

## Local Authority

Agents Note: Whilst every care has been taken to prepare these particulars, they are for guidance purposes only. All measurements are approximate and are for general guidance purposes only and whilst every care has been taken to ensure their accuracy, they should not be relied upon and potential buyers/tenants are advised to recheck the measurements.

Energy Efficiency Rating		Current	Maximum
Very energy efficient - lowest running costs			
(92 plus) <b>A</b>			
(81-91) <b>B</b>		<b>B6</b>	<b>B6</b>
(69-80) <b>C</b>			
(55-68) <b>D</b>			
(39-54) <b>E</b>			
(21-38) <b>F</b>			
(1-20) <b>G</b>			
Not energy efficient - higher running costs			
<b>England &amp; Wales</b>		EU Directive 2002/91/EC	

1 Hythe Street

Dartford

Kent

DA1 1BE

**LIVERMORES**  
THE ESTATE AGENTS

dartford@livermores.co.uk

01322 228090

www.livermores.co.uk