

LIVERMORES

THE ESTATE AGENTS

3 Bedrooms

House - Terraced

Price Guide

£550,000

Located in

Dartford



www.livermores.co.uk



14 Darenth Mill Lane

Dartford DA2 7BF



GUIDE PRICE £550,000 - £575,000... Livermores are proud to present to the market this stunning three bedroom home. The property has scenic views of the peaceful riverside on the Darenth Mill Development, which was built by Westoak Homes.

Furthermore, the beautiful house is on the Eastern Edge of the River Darent, in which brings in an array of fascinating wildlife, flora and fauna. In addition, the home inside has amazing features with a large lounge area which has under floor heating leading all across the ground floor.

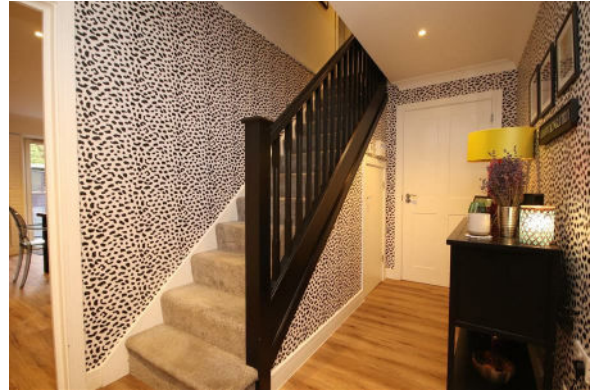
The ground floor has a separate W.C., hallway space and good overall kitchen space. Taking you upstairs to the first floor, with two double bedrooms, one being currently used as a beauty room by the owner and the second bedroom having a spacious en-suite, whilst also demonstrating lovely views onto the river from the Juliet balcony. As you walk along the commodious hallway you are greeted by a large family bathroom and further storage space.

The second floor you will find the third double bedroom, which also has an extremely large en-suite. There is also further storage and the home also complimented by its high-ceilings and high-end features.



14 Darenth Mill Lane

£550,000 Freehold



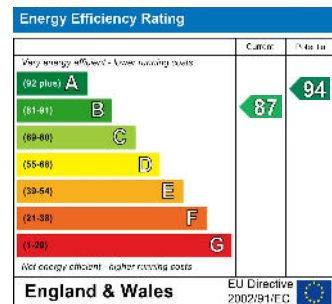
- GUIDE PRICE £550,000 - £575,000
- STUNNING RIVER VIEWS
- TWO EN-SUITES WITH FAMILY BATHROOM
- LUXURY WESTOAK HOMES
- SIMILAR PROPERTIES REQUIRED
- THREE DOUBLE BEDROOM
- TWO ALLOCATED PARKING SPACES AND VISITORS
- LARGE LOUNGE AND KITCHEN-DINER
- UNDER FLOOR HEATING - GROUND FLOOR
- EPC RATING 'B' COUNCIL TAX BAND 'F'



Council Tax Band F

Local Authority DARTFORD

Agents Note: Whilst every care has been taken to prepare these particulars, they are for guidance purposes only. All measurements are approximate and are for general guidance purposes only and whilst every care has been taken to ensure their accuracy, they should not be relied upon and potential buyers/tenants are advised to recheck the measurements.



1 Hythe Street

Dartford

Kent

DA1 1BE

LIVERMORES
THE ESTATE AGENTS

dartford@livermores.co.uk

01322 228090

www.livermores.co.uk