

# LIVERMORES

THE ESTATE AGENTS

5 Bedrooms

House - Semi-Detached

Offers In The Region Of

£595,000

Located in

Dartford



[www.livermores.co.uk](http://www.livermores.co.uk)



# 67 North Road

Dartford DA1 3ND



OFFERS IN THE REGION OF £595,000... Livermores are proud to present to the market this extended FIVE BEDROOM HOUSE situated in a popular location within WEST DARTFORD. The property is located within 0.3 miles of Wentworth Primary school and within walking distance of DARTFORD GRAMMAR SCHOOL and Crayford station. The spacious and well planned accommodation comprises entrance hall, study/bedroom, extended kitchen-diner, utility room and shower room, all in which are located on the ground floor of the property. Upon entering the first floor, you are greeted with four double bedrooms and a lovely-finished family bathroom. The property is being sold CHAIN FREE!

Furthermore, North Road is a highly sought-after location within the local area and has great transport links and local amenities, with Crayford town centre being a short walk away with many shops, cafes, pubs and restaurants.

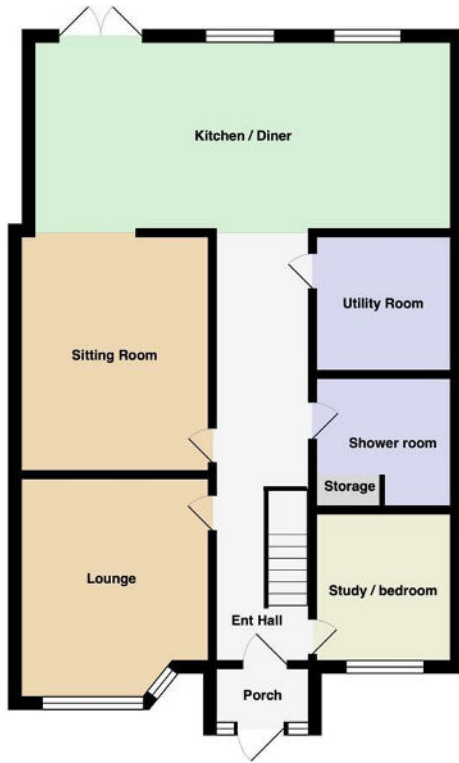
Features to note include off road parking to front, double glazing, central heating.

# 67 North Road

£595,000 Freehold



- OFFERS IN THE REGION OF £595,000
- CHAIN FREE!
- WALKING DISTANCE TO WENTWORTH PRIMARY SCHOOL
- WEST DARTFORD
- SIMILAR PROPERTIES REQUIRED
- FIVE BEDROOM EXTENDED SEMI-DETACHED HOUSE
- WALKING DISTANCE TO DARTFORD GRAMMAR SCHOOL
- FOUR DOUBLE BEDROOMS
- 0.4 MILES FROM CRAYFORD STATION
- EPC RATING 'C' COUNCIL TAX BAND 'D'



## Council Tax Band D

## Local Authority DARTFORD

Agents Note: Whilst every care has been taken to prepare these particulars, they are for guidance purposes only. All measurements are approximate and are for general guidance purposes only and whilst every care has been taken to ensure their accuracy, they should not be relied upon and potential buyers/tenants are advised to recheck the measurements.

| Energy Efficiency Rating                     |  | Current                 | Target |
|--|--|-------------------------|--------|
| Very energy efficient - lowest running costs |  |                         |        |
| (92 plus) A                                  |  |                         |        |
| (81-91) B                                    |  |                         |        |
| (69-80) C                                    |  | 75                      | 85     |
| (55-68) D                                    |  |                         |        |
| (39-54) E                                    |  |                         |        |
| (21-38) F                                    |  |                         |        |
| (1-20) G                                     |  |                         |        |
| Not energy efficient - higher running costs  |  |                         |        |
| England & Wales                              |  | EU Directive 2002/91/EC |        |

1 Hythe Street  
 Dartford  
 Kent  
 DA1 1BE



dartford@livermores.co.uk  
 01322 228090  
 www.company.co.uk