

LIVERMORES

THE ESTATE AGENTS

2 Bedrooms

House - End Terrace

Price Guide

£375,000

Located in

Dartford



www.livermores.co.uk



7 Warwick Way

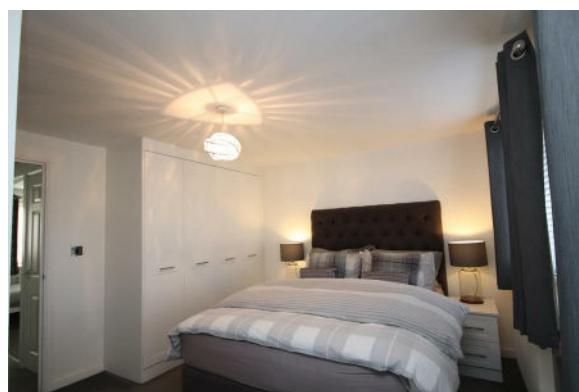
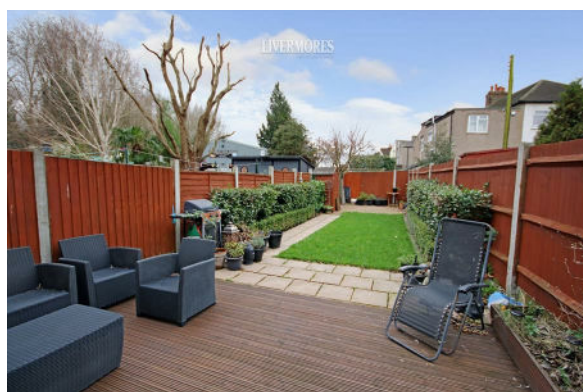
Dartford DA1 1NQ



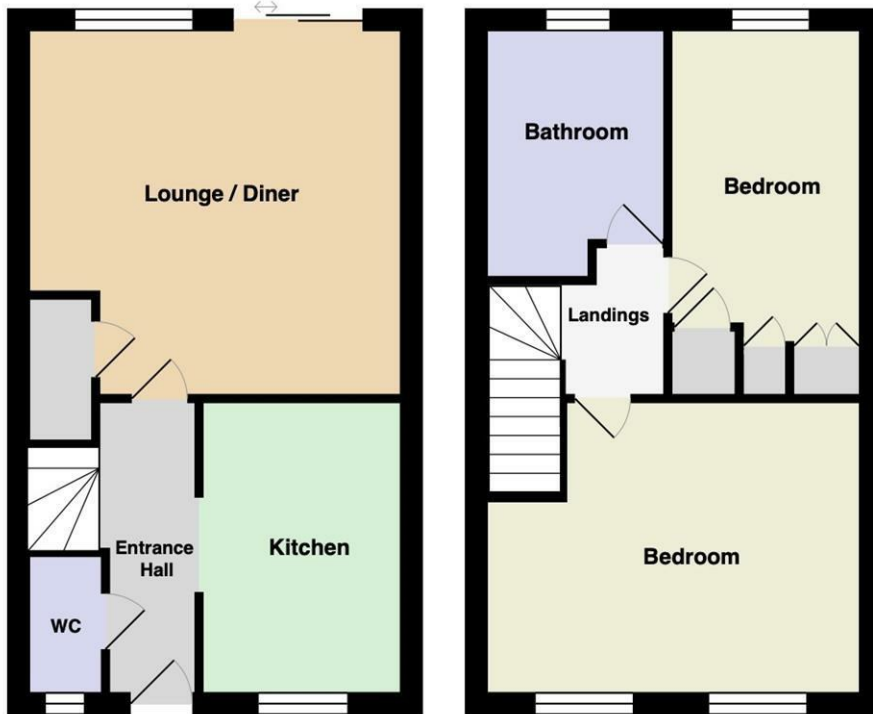
GUIDE PRICE £375,000 - £400,000... Livermores are proud to present to the market this, delightful two bedroom end house in a cul-de-sac location situated conveniently for Dartford town centre. The property has been decorated to a good standard by the present owner who has owned it from new. The home benefits from a gas fired central heating system, double glazing and 2 off road parking spaces. There is a modern white fitted kitchen, spacious lounge, ground floor cloakroom, two bedrooms (with wardrobes) bathroom and a garden to the rear. WE WOULD RECOMMEND AN EARLY VIEWING OF THIS FINE HOME TO AVOID DISAPPOINTMENT.

7 Warwick Way

£375,000 Freehold

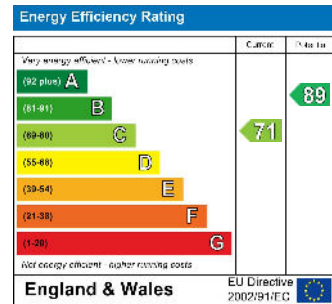


- GUIDE PRICE £375,000 - £400,000
- HIGH STANDARD OF DECOR
- DOUBLE GLAZING AND GAS CENTRAL HEATING
- OFF STREET PARKING FOR TWO VEHICLES
- SIMILAR PROPERTY REQUIRED
- GROUND FLOOR CLOAKROOM + LUXURY BATHROOM
- WHITE FITTED KITCHEN
- TWO BEDROOM END TERRACE HOUSE
- CONVENIENT FOR TOWN CENTRE AND AMENITIES
- COUNCIL TAX BAND C EPC C



Council Tax Band C
Local Authority DARTFORD

Agents Note: Whilst every care has been taken to prepare these particulars, they are for guidance purposes only. All measurements are approximate and are for general guidance purposes only and whilst every care has been taken to ensure their accuracy, they should not be relied upon and potential buyers/tenants are advised to recheck the measurements.



1 Hythe Street
 Dartford
 Kent
 DA1 1BE



dartford@livermores.co.uk
 01322 228090
 www.company.co.uk