



LIVERMORES
THE ESTATE AGENTS

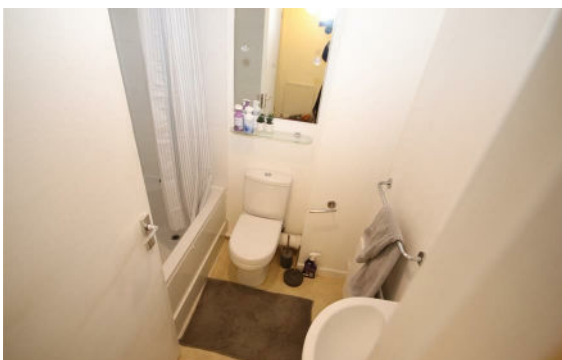
2 Bedrooms
House - Terraced
Located in Dartford
£1,450 PCM



lettings@livermores.co.uk

www.livermores.co.uk

01322 311427



LIVERMORES
THE ESTATE AGENTS

1 Hythe Street
Dartford
Kent
DA1 1BE

01322 311427

lettings@livermores.co.uk

www.livermores.co.uk

Situated in the heart of Dartford Town Centre and offering easy access for Dartford Mainline Station, High Street Shops and all local amenities, this super two bedroom terraced house should be top of your viewing list. The accommodation comprises Lounge, Dining Room with doors onto Garden, Two bedrooms (one double and one single), Upstairs bathroom off street parking to front. Available Immediately. Furnished. SIMILAR PROPERTIES REQUIRED. DEPOSIT £1673.07

Energy Efficiency Rating: C

Agents Note: Whilst every care has been taken to prepare these particulars, they are for guidance purposes only. All measurements are approximate and are for general guidance purposes only and whilst every care has been taken to ensure their accuracy, they should not be relied upon and potential buyers/tenants are advised to recheck the measurements.