

LIVERMORES

THE ESTATE AGENTS

3 Bedrooms

House - Terraced

Price Guide

£400,000

Located in

Dartford



www.livermores.co.uk



4 Kingswood Close

Dartford Kent DA1 3AD

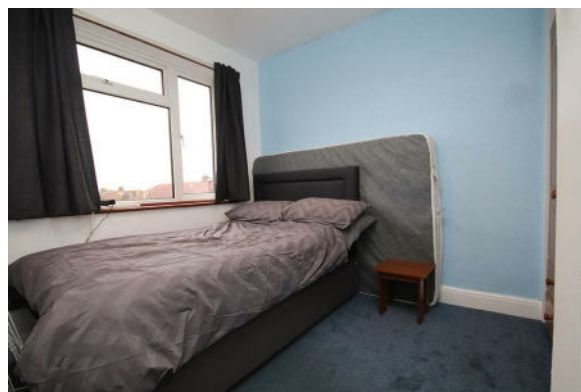


GUIDE PRICE £400,000 TO £425,000 * WEST DARTFORD * GRAMMAR SCHOOLS CATCHMENT * CUL DE SAC LOCATION * 3 BEDROOMS * BEAUTIFUL KITCHEN/DINER * SET OVER 3 FLOORS * BEDROOM IN LOFT HAS ENSUITE * 1ST FLOOR FAMILY BATHROOM * HARD STANDING TO FRONT * PARKING SPACE TO REAR ACCESSED VIA A SERVICE ROAD * VERY POPULAR LOCATION * VIEWING HIGHLY RECOMMENDED *



4 Kingswood Close

£400,000 Freehold



- WEST DARTFORD
- DARTFORD GRAMMAR SCHOOL CATCHMENT
- GUIDE PRICE £400,000 TO £425,000
- 3 BEDROOM FAMILY HOME
- BEAUTIFUL KITCHEN/DINER
- SET OVER 3 FLOORS
- BEDROOM WITH ENSUITE
- 1ST FLOOR FAMILY BATHROOM
- SIMILAR PROPERTIES REQUIRED
- COUNCIL TAX BAND 'C' EPC RATING





Council Tax Band C

Local Authority Dartford

Agents Note: Whilst every care has been taken to prepare these particulars, they are for guidance purposes only. All measurements are approximate and are for general guidance purposes only and whilst every care has been taken to ensure their accuracy, they should not be relied upon and potential buyers/tenants are advised to recheck the measurements.

Energy Efficiency Rating		Current	Maximum
Very energy efficient - lowest running costs			
(92 plus) A			
(81-91) B			86
(69-80) C		72	
(55-68) D			
(39-54) E			
(21-38) F			
(1-20) G			
Not energy efficient - higher running costs			
England & Wales		EU Directive 2002/91/EC	

1 Hythe Street
 Dartford
 Kent
 DA1 1BE



dartford@livermores.co.uk
 01322 228090
 www.livermores.co.uk