



LIVERMORES
THE ESTATE AGENTS

3 Bedrooms

Apartment

Located in Dartford

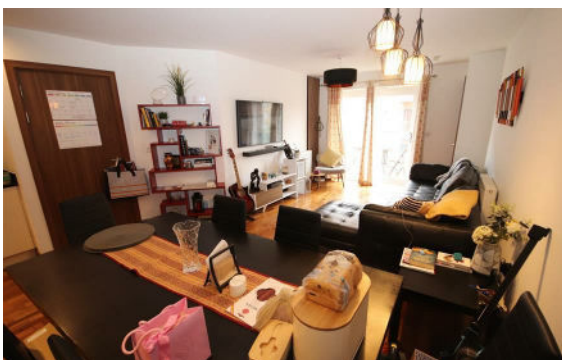
£2,000 PCM



lettings@livermores.co.uk

www.livermores.co.uk

01322 311427



* FOURTH FLOOR 3 BEDROOM APARTMENT* ENSUITE TO MASTER BEDROOM*
SEPERATE FAMILY BATHROOM*

* CENTRAL DARTFORD LOCATION * FURNISHED * UNDERGROUND SECURE PARKING
SPACE * BALCONY WITH GREAT VIEWS * EXCELLENT HIGH CEILINGS * COUNCIL TAX
BAND D * EPC RATING 'B' * AVAILABLE FROM 22ND APRIL 2024* VIEWING HIGHLY
RECOMMENDED* SIMILAR PROPERTIES REQUIRED* DEPOSIT £2307.69

Energy Efficiency Rating:

Agents Note: Whilst every care has been taken to prepare these particulars, they are for guidance purposes only. All measurements are approximate and are for general guidance purposes only and whilst every care has been taken to ensure their accuracy, they should not be relied upon and potential buyers/tenants are advised to recheck the measurements.

LIVERMORES
THE ESTATE AGENTS

1 Hythe Street
Dartford
Kent
DA1 1BE

01322 311427

lettings@livermores.co.uk

www.livermores.co.uk