



**LIVERMORES**  
THE ESTATE AGENTS

3 Bedrooms  
House - Semi-Detached  
Located in Dartford

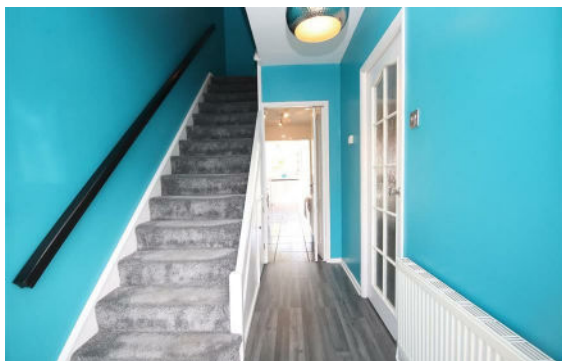
£400,000



[dartford@livermores.co.uk](mailto:dartford@livermores.co.uk)

[www.livermores.co.uk](http://www.livermores.co.uk)

01322 228090



**LIVERMORES**  
THE ESTATE AGENTS

1 Hythe Street  
Dartford  
Kent  
DA1 1BE

01322 228090

[dartford@livermores.co.uk](mailto:dartford@livermores.co.uk)

[www.livermores.co.uk](http://www.livermores.co.uk)

GUIDE PRICE £400,000 - £425,000... Livermores are proud to present to the market this THREE BEDROOM, EXTENDED SEMI-DETACHED family home. Offered to the market with NO CHAIN, this well-located property with a large outbuilding to the rear has easy access to the M25, A2 and Darent Valley Hospital. It comprises a through lounge, kitchen and dining area to the ground floor with three bedrooms and a bathroom to the first floor.

Furthermore, this lovely home would make an excellent first time buy. It is situated a short distance from an excellent primary school and the fast track bus service to Bluewater with its vast array of shops, restaurants and cafes. The property has double glazing and gas central heating.

Externally the property shows-off a sizable rear garden and has OFF-STREET PARKING...VIEWING RECOMMENDED.

### Energy Efficiency Rating:

Agents Note: Whilst every care has been taken to prepare these particulars, they are for guidance purposes only. All measurements are approximate and are for general guidance purposes only and whilst every care has been taken to ensure their accuracy, they should not be relied upon and potential buyers/tenants are advised to recheck the measurements.