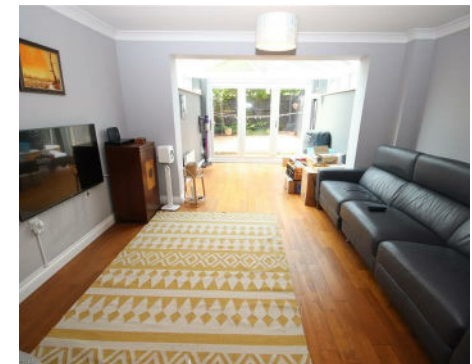




3 Bedrooms
House - Townhouse
Located in Dartford
**£1,950 Per Calendar
Month**



lettings@livermores.co.uk

www.livermores.co.uk

01322 311427



LIVERMORES
THE ESTATE AGENTS

1 Hythe Street
Dartford
Kent
DA1 1BE

01322 311427

lettings@livermores.co.uk

www.livermores.co.uk

Welcome to Cochrane Drive, Dartford - a charming terraced house with three bedrooms and three bathrooms, including a convenient en-suite. This property boasts a spacious reception room, perfect for entertaining guests or relaxing with family. The bedrooms are generously sized, offering ample space for all your needs.

One of the highlights of this property is the two allocated parking spaces, ensuring you never have to worry about parking again. The location is simply unbeatable, with easy access to the town centre, public transport, and excellent schools, making it ideal for families.

Additionally, the house features a lovely conservatory and a rear garden, providing a peaceful retreat where you can enjoy the outdoors without leaving the comfort of your home. This property is available immediately, offering you the opportunity to move in and start enjoying all it has to offer without delay.

Don't miss out on the chance to make this wonderful house your new home. Contact us today to arrange a viewing and experience the beauty and convenience of living at Cochrane Drive.

Energy Efficiency Rating: C

Agents Note: Whilst every care has been taken to prepare these particulars, they are for guidance purposes only. All measurements are approximate and are for general guidance purposes only and whilst every care has been taken to ensure their accuracy, they should not be relied upon and potential buyers/tenants are advised to recheck the measurements.