

LIVERMORES

THE ESTATE AGENTS

3 Bedrooms

House - Terraced

Price Guide

£475,000

Located in

Dartford



www.livermores.co.uk



23 Shackleton Drive

Dartford DA1 5UH



GUIDE PRICE £475,000 - £500,000... Nestled in the charming Shackleton Drive, Dartford, this terraced house is a gem waiting to be discovered. Boasting three double bedrooms, and three bathrooms spread over three floors, this property offers ample space for comfortable living.

The master bedroom comes with an en-suite for added convenience, while the first-floor bathroom and ground floor W/C cater to the needs of a busy household. The property's well-presented interior is sure to impress even the most discerning buyer.

Conveniently located within a third of a mile from Dartford Station, commuting is a breeze for residents. Moreover, being in the catchment area of the prestigious Dartford Grammar School adds to the appeal of this home for families with school-going children.

With off-street parking to the front, parking headaches are a thing of the past. The chain-free status of this property makes it an even more attractive prospect for those looking to make a swift move.

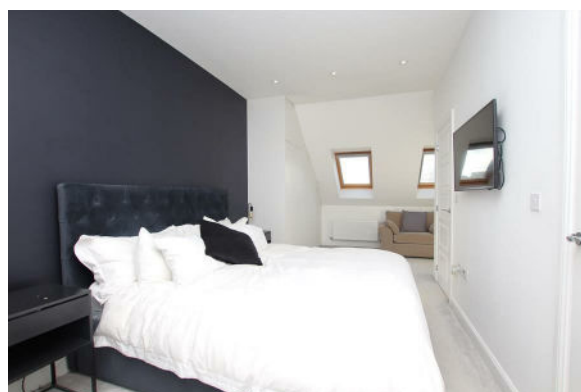
Don't miss out on the opportunity to make this house your home sweet home in Dartford.

LIVERMORES



23 Shackleton Drive

£475,000 Freehold



- GUIDE PRICE £475,000 - £500,000
- DARTFORD GRAMMAR SCHOOL CATCHMENT AREA
- THROUGH LOUNGE
- GROUND FLOOR W.C.
- SIMILAR PROPERTIES REQUIRED
- THREE DOUBLE BEDROOM FAMILY HOME
- WITHIN WALKING DISTANCE OF DARTFORD STATION
- EN-SUITE TO MASTER BEDROOM
- FIRST FLOOR FAMILY BATHROOM
- COUNCIL TAX BAND 'E', EPC RATING 'B'





Council Tax Band E

Local Authority DARTFORD

Agents Note: Whilst every care has been taken to prepare these particulars, they are for guidance purposes only. All measurements are approximate and are for general guidance purposes only and whilst every care has been taken to ensure their accuracy, they should not be relied upon and potential buyers/tenants are advised to recheck the measurements.

Energy Efficiency Rating		Current	Maximum
Very energy efficient - lowest running costs	(92 plus) A		96
(81-91)	B	86	
(69-80)	C		
(55-68)	D		
(39-54)	E		
(21-38)	F		
(1-20)	G		
Net energy efficient - higher running costs			
England & Wales		EU Directive 2002/91/EC	

1 Hythe Street
 Dartford
 Kent
 DA1 1BE



dartford@livermores.co.uk

01322 228090

www.livermores.co.uk