



LIVERMORES
THE ESTATE AGENTS

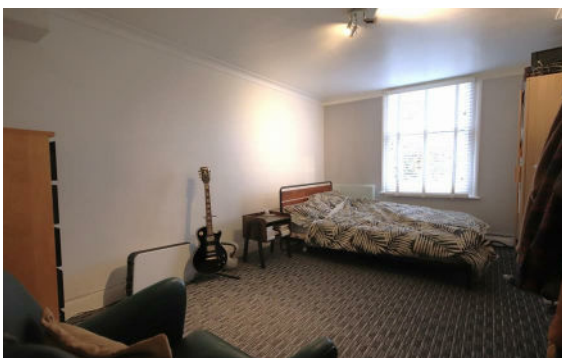
1 Bedrooms
Apartment
Located in Dartford
£1,150 Per Month



lettings@livermores.co.uk

www.livermores.co.uk

01322 311427



Welcome to this charming one-bedroom ground floor apartment located on Highfield Road in Dartford. This property offers a fantastic opportunity for those seeking a cozy and convenient living space.

Situated in a great location close to all amenities and public transport links, this apartment provides easy access to everything you might need. The allocated parking space ensures you'll never have to worry about finding a place to park your vehicle.

The very good-sized bedroom offers a comfortable retreat at the end of the day, providing ample space for relaxation and rest. With the property becoming available in January 2025, you have the perfect opportunity to secure this lovely apartment for yourself.

Don't miss out on the chance to make this wonderful apartment your new home. Contact us today to arrange a viewing and start envisioning your life in this delightful property on Highfield Road.

Energy Efficiency Rating: E

Agents Note: Whilst every care has been taken to prepare these particulars, they are for guidance purposes only. All measurements are approximate and are for general guidance purposes only and whilst every care has been taken to ensure their accuracy, they should not be relied upon and potential buyers/tenants are advised to recheck the measurements.

LIVERMORES
THE ESTATE AGENTS

1 Hythe Street

Dartford

Kent

DA1 1BE

01322 311427

lettings@livermores.co.uk

www.livermores.co.uk