

LIVERMORES

THE ESTATE AGENTS

2 Bedrooms

House - End Terrace

Price Guide

£350,000

Located in

Dartford



www.livermores.co.uk



25 Brewers Field

Dartford DA2 7PJ



GUIDE PRICE £350,000 - £365,000... Nestled in the charming Brewers Field of Dartford, this delightful end terrace house is a gem waiting to be discovered. Boasting a spacious reception room, two inviting bedrooms, and a modern bathroom, this property offers a perfect blend of comfort and style.

Situated in a tranquil cul-de-sac, this residence provides a peaceful retreat from the hustle and bustle of everyday life. With easy access to Swanley and Dartford town centres, you'll enjoy a plethora of amenities including convenient bus routes and train lines to central London.

Step inside to discover a welcoming lounge, a well-equipped kitchen, and a charming conservatory that bathes the space in natural light. Upstairs, the master bedroom boasts ample built-in storage, ensuring a clutter-free environment. The modern fitted bathroom adds a touch of luxury to everyday living. Furthermore, your allocated parking space ensures convenience for you.

With its prime location near the M25, Bluewater, Ebbsfleet International, local schools, and parks, this property offers a lifestyle of convenience and comfort. Whether you're a first-time buyer or looking for a peaceful abode, this house is sure to captivate your heart.

Don't miss out on the opportunity to own a piece of serenity in the popular cul-de-sac location of Wilmington. This charming house is ready to welcome you home.



25 Brewers Field

£350,000 Freehold



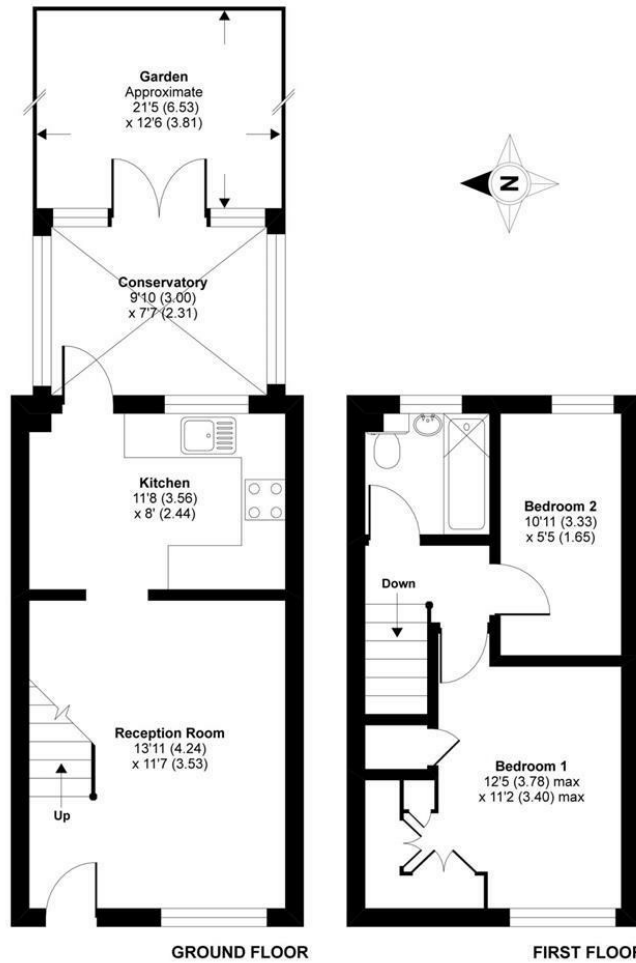
- GUIDE PRICE £350,000 - £365,000
- 1 ALLOCATED PARKING SPACE
- POPULAR CUL-DE-SAC LOCATION
- LOCATED IN WILMINGTON
- SIMILAR PROPERTIES REQUIRED
- TWO BEDROOM END OF TERRACE HOUSE
- CONSERVATORY SPACE
- WELL-PRESENTED THROUGHOUT
- FIRST-FLOOR BATHROOM
- COUNCIL TAX BAND 'C', EPC RATING 'D'



Brewers Field, Dartford, DA2

Approximate Area = 609 sq ft / 56.6 sq m

For identification only - Not to scale

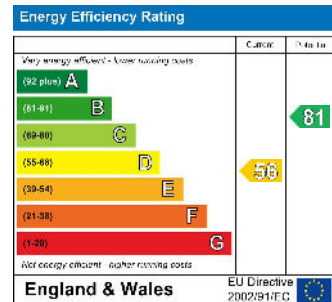


Floor plan produced in accordance with RICS Property Measurement Standards incorporating International Property Measurement Standards (IPMS2 Residential). © richcom 2020. Produced for Acorn Group. REF: 636902

Council Tax Band C

Local Authority DARTFORD

Agents Note: Whilst every care has been taken to prepare these particulars, they are for guidance purposes only. All measurements are approximate and are for general guidance purposes only and whilst every care has been taken to ensure their accuracy, they should not be relied upon and potential buyers/tenants are advised to recheck the measurements.



1 Hythe Street

Dartford

Kent

DA1 1BE

LIVERMORES
THE ESTATE AGENTS

dartford@livermores.co.uk

01322 228090

www.livermores.co.uk