

LIVERMORES

THE ESTATE AGENTS

3 Bedrooms

House - Semi-Detached

By Auction

£300,000

Located in

Dartford



www.livermores.co.uk



15 Marcus Road

Dartford DA1 3JX



GUIDE PRICE £300,000

TO BE SOLD BY PUBLIC AUCTION THURSDAY 30th OCTOBER 2025.

Acting as joint auctioneer with Clive Emson Auctioneers we are delighted to offer this
THREE BEDROOM SEMI-DETACHED HOUSE.

To book a viewing please visit Clive Emson's website.



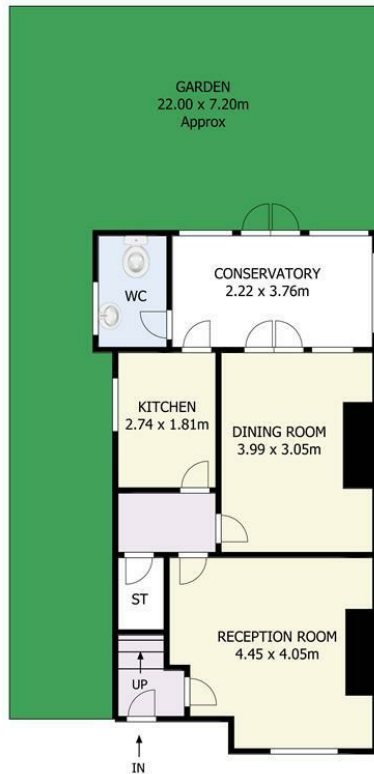
15 Marcus Road

£300,000 Freehold



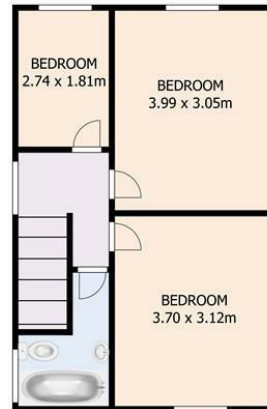
- GUIDE PRICE £300,000
- TO BE SOLD BY PUBLIC AUCTION
THURSDAY 30 OCTOBER 2025
- CONTACT US FOR VIEWING DATES
- HUGE AMOUNTS OF POTENTIAL
- PLEASE VISIT CLIVE EMSONS WEBSITE
- CHAIN FREE!
- DARTFORD GRAMMAR SCHOOL
CATCHMENT AREA
- OFF-STREET PARKING
- POTENTIAL TO EXTEND (STPP)
- COUNCIL TAX BAND 'E', EPC RATING 'E'





Ground Floor

MARCUS ROAD DA1 3JX

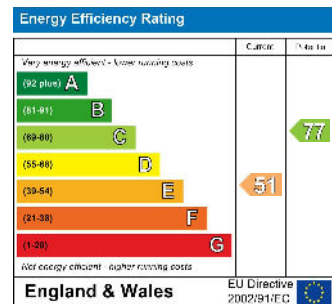


First Floor

Council Tax Band E

Local Authority DARTFORD

Agents Note: Whilst every care has been taken to prepare these particulars, they are for guidance purposes only. All measurements are approximate and are for general guidance purposes only and whilst every care has been taken to ensure their accuracy, they should not be relied upon and potential buyers/tenants are advised to recheck the measurements.



1 Hythe Street

Dartford

Kent

DA1 1BE

LIVERMORES
THE ESTATE AGENTS

dartford@livermores.co.uk

01322 228090

www.livermores.co.uk