



2 Bedrooms

Apartment

Located in London

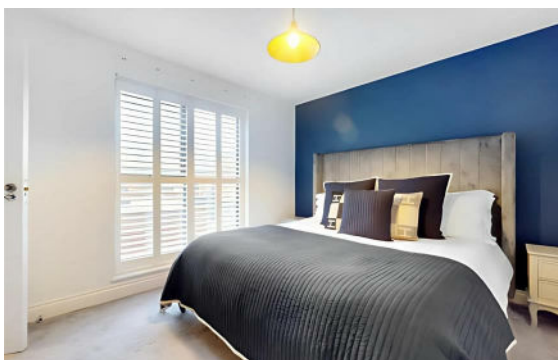
£1,800 Per Month



crayford@livermores.co.uk

www.livermores.co.uk

01322 550777



Welcome to this modern two-bedroom apartment located on Elm Terrace in London, available for rent furnished. This purpose-built first-floor residence offers a delightful blend of comfort and convenience, making it an ideal choice for professionals or small families.

As you enter the apartment, you will find a spacious reception room that seamlessly connects to a contemporary kitchen and dining area. This open-plan layout is perfect for entertaining guests or enjoying quiet evenings at home. The lounge area provides access to a private roof terrace, where you can unwind and enjoy the fresh air in a tranquil setting.

The apartment features two generously sized double bedrooms, ensuring ample space for relaxation. The master bedroom boasts an en suite bathroom, providing added privacy and convenience. A separate family bathroom is also available, catering to the needs of residents and guests alike.

In addition to its stylish interiors, this property benefits from secure underground parking, offering peace of mind for those with vehicles. The location is particularly advantageous, with excellent transport links nearby, making commuting around London effortless.

This apartment is a wonderful opportunity for those seeking a modern living space in a vibrant city. Don't miss the chance to make this lovely property your new home.

Energy Efficiency Rating:

Agents Note: Whilst every care has been taken to prepare these particulars, they are for guidance purposes only. All measurements are approximate and are for general guidance purposes only and whilst every care has been taken to ensure their accuracy, they should not be relied upon and potential buyers/tenants are advised to recheck the measurements.

LIVERMORES
THE ESTATE AGENTS

126 Crayford Road

Crayford

Kent

DA1 4ES

01322 550777

crayford@livermores.co.uk

www.livermores.co.uk