



LIVERMORES
THE ESTATE AGENTS

3 Bedrooms

House - Townhouse

Located in Greenhithe

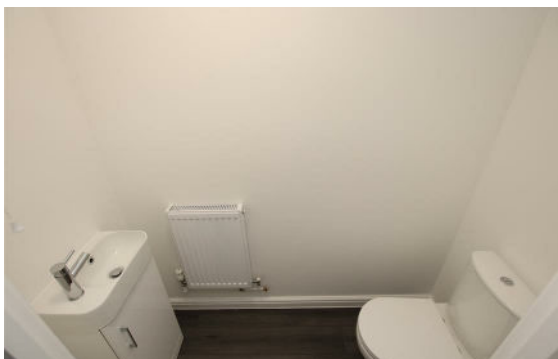
£1,900 Per Month



lettings@livermores.co.uk

www.livermores.co.uk

01322 311427



Nestled in the charming area of Watermans Way, Greenhithe, this delightful three-bedroom townhouse presents an excellent opportunity for those seeking a modern and comfortable home. Recently refurbished and freshly painted throughout, the property boasts a fresh and inviting atmosphere, making it perfect for families or professionals alike.

The newly fitted kitchen is a highlight of the home, featuring contemporary fixtures and ample storage, ideal for culinary enthusiasts. The property also includes a newly renovated bathroom, designed with modern aesthetics and functionality in mind.

The three well-proportioned bedrooms provide comfortable living spaces, each with the potential to be personalised to suit your needs. The townhouse is situated in a great location, offering convenient access to local amenities and transport links, making it an ideal choice for those commuting or seeking a vibrant community. The property also

Energy Efficiency Rating: C

Agents Note: Whilst every care has been taken to prepare these particulars, they are for guidance purposes only. All measurements are approximate and are for general guidance purposes only and whilst every care has been taken to ensure their accuracy, they should not be relied upon and potential buyers/tenants are advised to recheck the measurements.

LIVERMORES
THE ESTATE AGENTS

1 Hythe Street
Dartford
Kent
DA1 1BE

01322 311427

lettings@livermores.co.uk

www.livermores.co.uk