

LIVERMORES
THE ESTATE AGENTS

2 Bedrooms

House - End Terrace

Offers In The Region Of

£325,000

Located in

Dartford



www.livermores.co.uk



26 Wilks Road

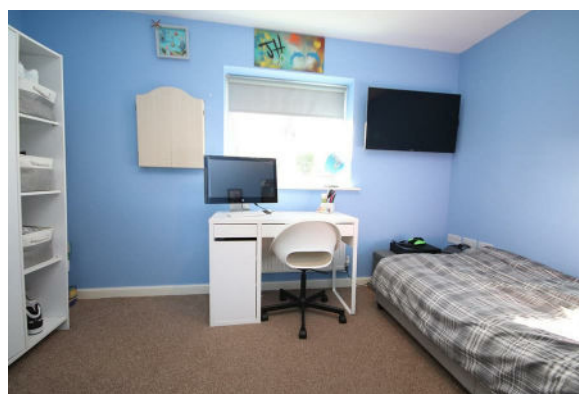
Dartford Kent DA2 6FT



PRICE RANGE £325,000 TO £350,000 This delightful Coach House house offers a perfect blend of modern living and comfort. With two well-proportioned bedrooms, including a master bedroom complete with an ensuite bathroom. There is an open-plan reception area with well appointed kitchen. In addition to the ensuite, the property boasts a family bathroom. The modern development enhances the appeal of this home. Ideal for families as the property faces a play park which can be seen from the front of the property. Parking is never a concern here, as the property comes with ample parking options, including a garage, making it easy for you and your guests to come and go with ease. With its prime location and modern features, this property is sure to attract those looking for a quality home in Dartford. **VIEWING HIGHLY RECOMMENDED**

26 Wilks Road

£325,000 Freehold

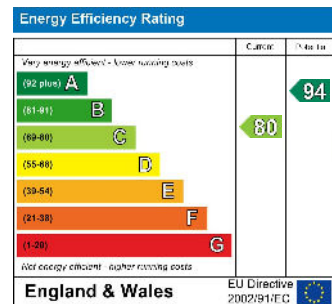


- PRICE RANGE £325,000 TO £350,000
- ENSUITE TO MASTER
- MODERN KITCHEN
- AMPLE PARKING & GARAGE
- SIMILAR PROPERTIES REQUIRED
- 2 DOUBLE BEDROOMS
- OPEN PLAN RECEPTION ROOM
- OPPOSITE A PLAYPARK
- EXCELLENT 1st TIME BUY
- EPC RATING COUNCIL TAX BAND D

Council Tax Band C

Local Authority Dartford

Agents Note: Whilst every care has been taken to prepare these particulars, they are for guidance purposes only. All measurements are approximate and are for general guidance purposes only and whilst every care has been taken to ensure their accuracy, they should not be relied upon and potential buyers/tenants are advised to recheck the measurements.



1 Hythe Street

Dartford

Kent

DA1 1BE

LIVERMORES
THE ESTATE AGENTS

dartford@livermores.co.uk

01322 228090

www.company.co.uk