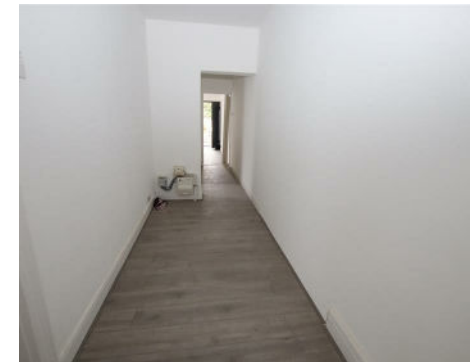




**LIVERMORES**  
THE ESTATE AGENTS

1 Bedrooms  
Flat - First Floor  
Located in Erith  
**£1,100 Per Month**



[crayford@livermores.co.uk](mailto:crayford@livermores.co.uk)

[www.livermores.co.uk](http://www.livermores.co.uk)

01322 550777



**LIVERMORES**  
THE ESTATE AGENTS

126 Crayford Road

Crayford

Kent

DA1 4ES

01322 550777

[crayford@livermores.co.uk](mailto:crayford@livermores.co.uk)

[www.livermores.co.uk](http://www.livermores.co.uk)

Situated on Bexley Road in Erith, this newly refurbished first floor flat above a shop offers a delightful living space for those seeking comfort and convenience. With one reception room and one bedroom, the flat is designed to be bright and spacious, making it an ideal retreat for individuals or couples.

Access to the flat is via the rear of the building, ensuring a sense of privacy while still being in the heart of the community. The property boasts a well-appointed bathroom, providing all the necessary amenities for modern living.

Situated in a good location, residents will benefit from easy access to a variety of local amenities, including shops, cafes, and parks. Public transport links are also conveniently close, making commuting and exploring the surrounding areas a breeze.

This flat is available for immediate rental, presenting a fantastic opportunity for those looking to settle in a vibrant area with all the essentials at their fingertips. Don't miss the chance to make this charming flat your new home.

## Energy Efficiency Rating: D

Agents Note: Whilst every care has been taken to prepare these particulars, they are for guidance purposes only. All measurements are approximate and are for general guidance purposes only and whilst every care has been taken to ensure their accuracy, they should not be relied upon and potential buyers/tenants are advised to recheck the measurements.