

# LIVERMORES

THE ESTATE AGENTS

2 Bedrooms

Apartment

Offers In The Region Of

£275,000

Located in

Dartford



[www.livermores.co.uk](http://www.livermores.co.uk)



# 7 Crawford Avenue

Dartford DA1 2GB



Welcome to this charming flat located on Crawford Avenue in Dartford. This delightful property features two well-proportioned bedrooms, making it an ideal choice for small families, couples, or individuals seeking extra space. The flat boasts a comfortable reception room, perfect for relaxing or entertaining guests.

With two bathrooms, convenience is at the forefront, ensuring that morning routines and evening unwinding can be done with ease. The layout of the flat is designed to maximise space and light, creating a warm and inviting atmosphere throughout.

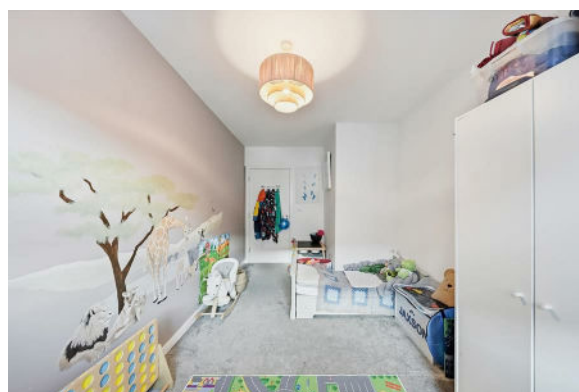
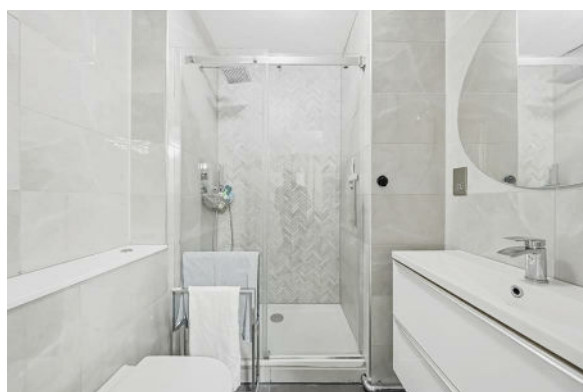
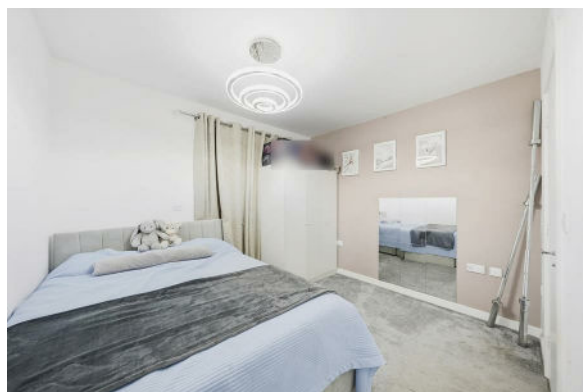
Situated in a desirable area of Dartford, this property offers easy access to local amenities, including shops, parks, and transport links, making it a practical choice for those commuting or seeking a vibrant community.

This flat presents a wonderful opportunity for anyone looking to settle in a well-connected and friendly neighbourhood. Don't miss the chance to make this lovely flat your new home.



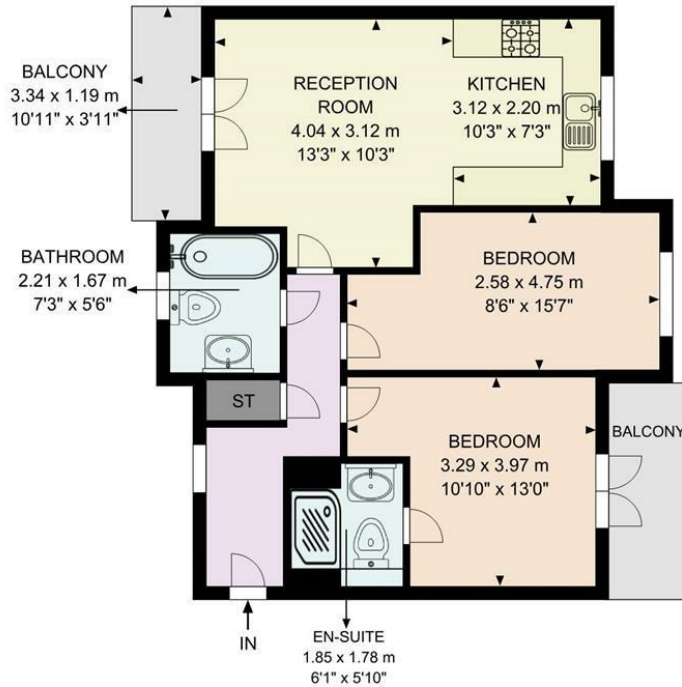
# 7 Crawford Avenue

£275,000 Leasehold



- OFFERS IN THE REGION OF £275,000
- WEST DARTFORD
- EN SUITE TO MASTER BEDROOM
- HEALTHY LEASE
- SIMILAR PROPERTIES REQUIRED
- TWO DOUBLE BEDROOM APARTMENT
- SPACIOUS OPEN PLAN LIVING
- WALKING DISTANCE TO STATION
- ALLOCATED PARKING
- COUNCIL TAX BAND 'D', EPC RATING 'C'





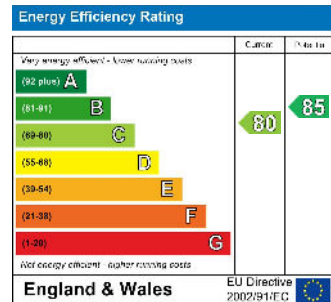
**CRAWFORD AVENUE DA1**

The plan is intended solely as a layout guide, and no liability is assumed for any errors, omissions, or inaccuracies. It does not constitute, in whole or in part, an offer or contract. Any intending purchaser or lessee should satisfy themselves, through inspection searches, enquiries, and a full survey, as to the accuracy of the information provided. All areas, measurements, wall thicknesses, shapes, compass bearing, and distances are approximate and should not be relied upon for valuation purposes or as the basis of any sale or letting. No guarantee is provided regarding the total area. All measurements are taken at the widest points, internally, with the first measurement referring to the vertical dimension. May not be to scale. Powered by airvideography.com

**Council Tax Band D**

**Local Authority DARTFORD**

Agents Note: Whilst every care has been taken to prepare these particulars, they are for guidance purposes only. All measurements are approximate and are for general guidance purposes only and whilst every care has been taken to ensure their accuracy, they should not be relied upon and potential buyers/tenants are advised to recheck the measurements.



1 Hythe Street  
 Dartford  
 Kent  
 DA1 1BE



dartford@livermores.co.uk  
 01322 228090  
 www.livermores.co.uk