



3 Bedrooms

Maisonette

Located in Erith

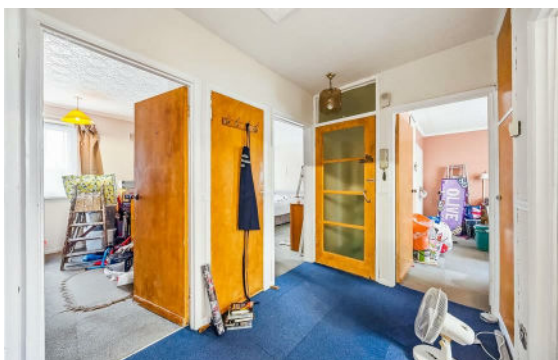
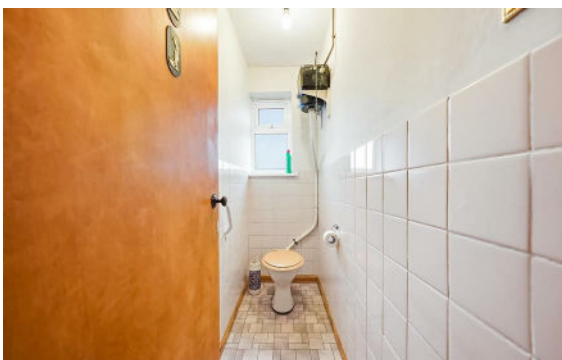
£235,000



[crayford@livermores.co.uk](mailto:crayford@livermores.co.uk)

[www.livermores.co.uk](http://www.livermores.co.uk)

01322 550777



**LIVERMORES**  
THE ESTATE AGENTS

126 Crayford Road  
Crayford  
Kent  
DA1 4ES

01322 550777

[crayford@livermores.co.uk](mailto:crayford@livermores.co.uk)

[www.livermores.co.uk](http://www.livermores.co.uk)

**\*\*CASH BUYERS ONLY\*\*** Nestled in the tranquil cul-de-sac of Maselfield Close, Erith, this charming maisonette presents an excellent opportunity for those seeking a spacious family home or a promising investment. Spanning an impressive 861 square feet, the property boasts three generously sized double bedrooms, ensuring ample space for relaxation and comfort.

The heart of the home features a welcoming reception room, perfect for entertaining guests or enjoying quiet evenings in. The layout is complemented by a well-appointed bathroom and separate WC, catering to the needs of modern living.

One of the standout features of this property is the large private garden, offering a delightful outdoor space for gardening enthusiasts or families with children. This expansive area provides a blank canvas for those looking to create their own personal oasis.

## Energy Efficiency Rating: D

Agents Note: Whilst every care has been taken to prepare these particulars, they are for guidance purposes only. All measurements are approximate and are for general guidance purposes only and whilst every care has been taken to ensure their accuracy, they should not be relied upon and potential buyers/tenants are advised to recheck the measurements.