

LIVERMORES

THE ESTATE AGENTS

3 Bedrooms

House - Semi-Detached

Offers In The Region Of

£425,000

Located in

Dartford



www.livermores.co.uk



23 Heath Lane

Dartford DA1 2QE



Livermores are proud to present this CHAIN FREE, three-bedroom semi-detached house which presents an excellent opportunity for families and first-time buyers alike. The property boasts a spacious layout, providing ample room for comfortable living.

Upon entering, you are greeted by a welcoming hallway that leads to a generous living area, perfect for relaxation and entertaining guests. The three bedrooms are thoughtfully designed, providing a peaceful retreat for rest and relaxation. The bathroom is conveniently located, ensuring ease of access for all residents.

Situated in Dartford, this home benefits from excellent local amenities, including shops, schools, and parks, all within easy reach. The area is well-connected, with convenient transport links to London and beyond, making it an ideal location for commuters.

In summary, this three-bedroom semi-detached house on Heath Lane is a fantastic opportunity for those seeking a comfortable and convenient home in a desirable location. With its spacious interiors and lovely outdoor space, it is sure to appeal to a wide range of buyers. Do not miss the chance to make this charming property your own.



23 Heath Lane

£425,000 Freehold



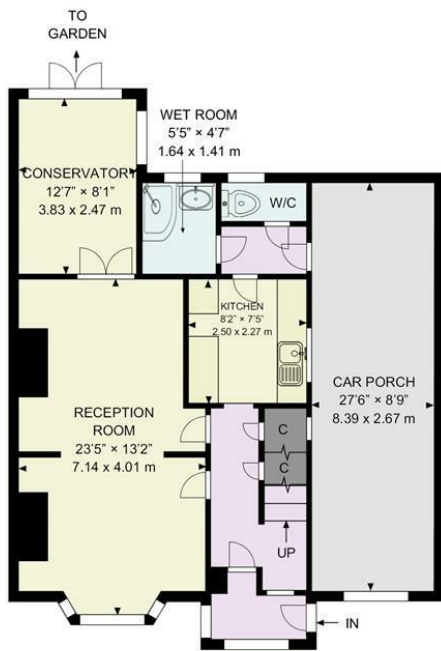
- OFFERS IN THE REGION OF £425,000
- DARTFORD GRAMMAR SCHOOL CATCHMENT AREA
- OFF-STREET PARKING
- CHAIN FREE!
- SIMILAR PROPERTIES REQUIRED
- THREE BEDROOM SEMI-DETACHED HOUSE
- FAMILY BATHROOM & SEPARATE W.C.
- CLOSE PROXIMITY DARTFORD STATION & TOWN CENTRE
- SOUGHT-AFTER WEST DARTFORD LOCATION
- COUNCIL TAX BAND 'D', EPC RATING 'D'

LIVERMORES

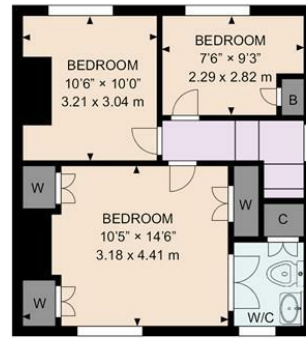


LIVERMORES





Ground Floor



First Floor

HEATH LANE DARTFORD DA1

The plan is intended solely as a layout guide, and no liability is assumed for any errors, omissions, or inaccuracies. It does not constitute, in whole or in part, an offer or contract. Any intending purchaser or lessee should satisfy themselves, through inspection searches, enquiries, and a full survey, as to the accuracy of the information provided. All areas, measurements, wall thicknesses, shapes, compass bearing, and distances are approximate and should not be relied upon for valuation purposes or as the basis of any sale or letting. No guarantee is provided regarding the total area. All measurements are taken at the widest points, internally, with the first measurement referring to the vertical dimension. May not be to scale. Powered by airvideography.com

Council Tax Band D

Local Authority DARTFORD

Agents Note: Whilst every care has been taken to prepare these particulars, they are for guidance purposes only. All measurements are approximate and are for general guidance purposes only and whilst every care has been taken to ensure their accuracy, they should not be relied upon and potential buyers/tenants are advised to recheck the measurements.

Energy Efficiency Rating		Current	Maximum
Very energy efficient - lowest running costs			
(92 plus) A			
(81-91) B			
(69-80) C			76
(55-68) D		60	
(39-54) E			
(21-38) F			
(1-20) G			
Not energy efficient - higher running costs			
England & Wales		EU Directive 2002/91/EC	

1 Hythe Street
 Dartford
 Kent
 DA1 1BE



dartford@livermores.co.uk
 01322 228090
 www.livermores.co.uk