

LIVERMORES

THE ESTATE AGENTS

2 Bedrooms

Apartment

Per Month

£1,600 Per
Month

Located in

Swanscombe



www.livermores.co.uk



27 Rixson Road

Swanscombe DA10 1GD



Situated in the desirable Ebbsfleet Valley, we are pleased to present this charming two-bedroom first-floor apartment on Rixson Road. This delightful residence boasts two spacious double bedrooms, one of which features a convenient en-suite bathroom, providing both comfort and privacy for its occupants.

The apartment is designed for modern living, with a well-appointed reception room that offers a welcoming space for relaxation and entertainment. A standout feature of this property is the lovely balcony, which presents stunning views, perfect for enjoying a morning coffee or unwinding in the evening.

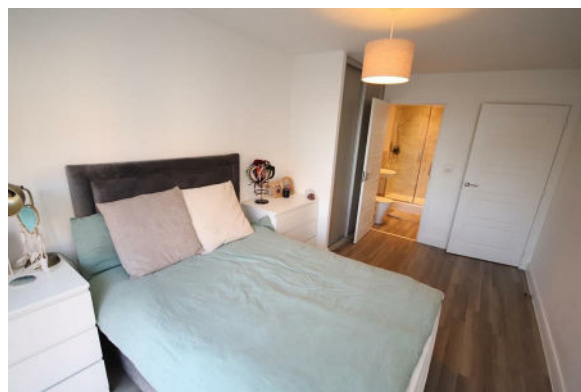
For those with vehicles, allocated parking is included, ensuring convenience and peace of mind.

Situated in a good location, this property is ideal for those seeking a blend of comfort and accessibility. Available immediately, this apartment is an excellent opportunity for anyone looking to make Ebbsfleet Valley their home. Do not miss the chance to view this wonderful property.



27 Rixson Road

£1,600 Per Month



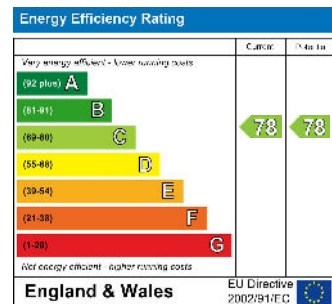
- MODERN FIRST FLOOR APARTMENT
- PART FURNISHED
- SEPARATE FAMILY BATHROOM
- ALLOCATED PARKING
- AVAILABLE IMMEDIATELY
- TWO DOUBLE BEDROOMS
- EN-SUITE TO MASTER BEDROOM
- BALCONY
- COUNCIL TAX BAND 'D' EPC RATING 'C'
- DEPOSIT £1846.15



Council Tax Band D

Local Authority Dartford

Agents Note: Whilst every care has been taken to prepare these particulars, they are for guidance purposes only. All measurements are approximate and are for general guidance purposes only and whilst every care has been taken to ensure their accuracy, they should not be relied upon and potential buyers/tenants are advised to recheck the measurements.



1 Hythe Street
Dartford
Kent
DA1 1BE



lettings@livermores.co.uk
01322 311427
www.livermores.co.uk