

LIVERMORES

THE ESTATE AGENTS

2 Bedrooms

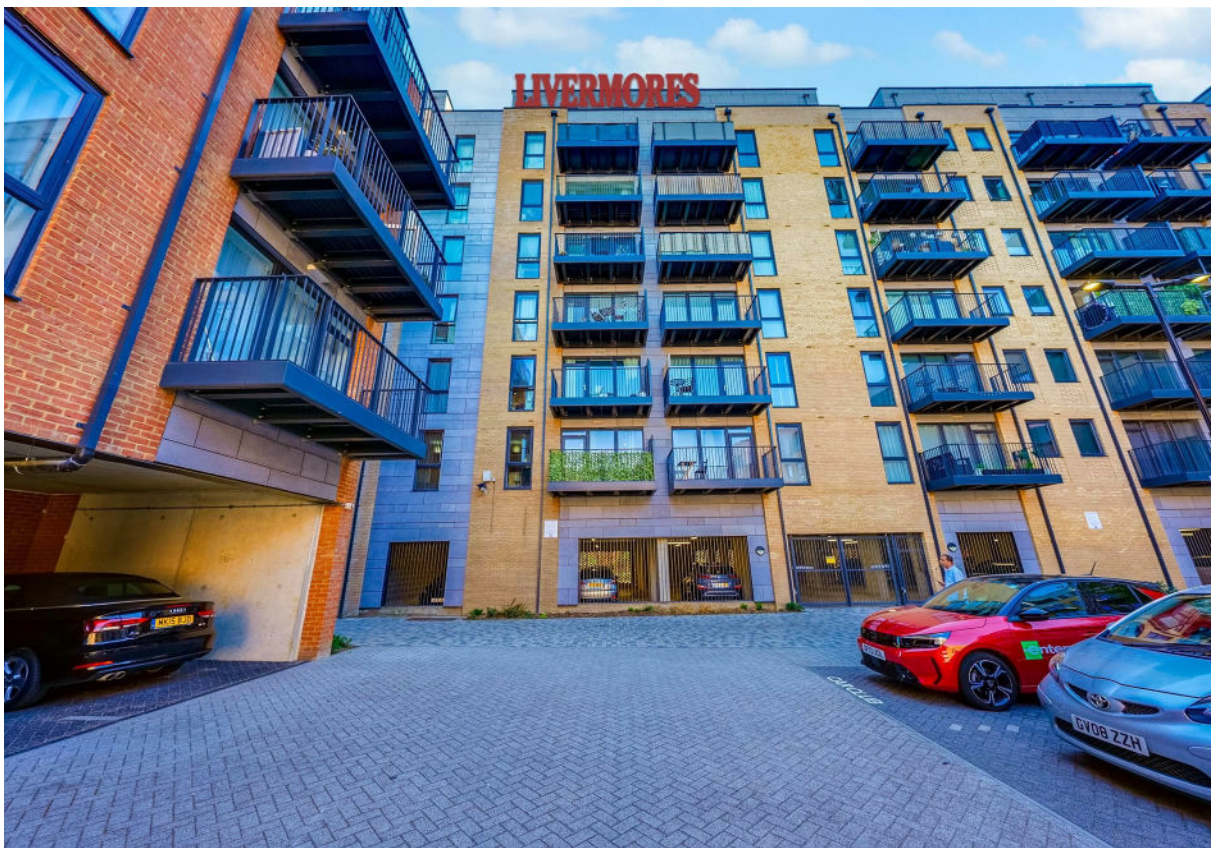
Flat - First Floor

Price Guide

£330,000

Located in

Dartford

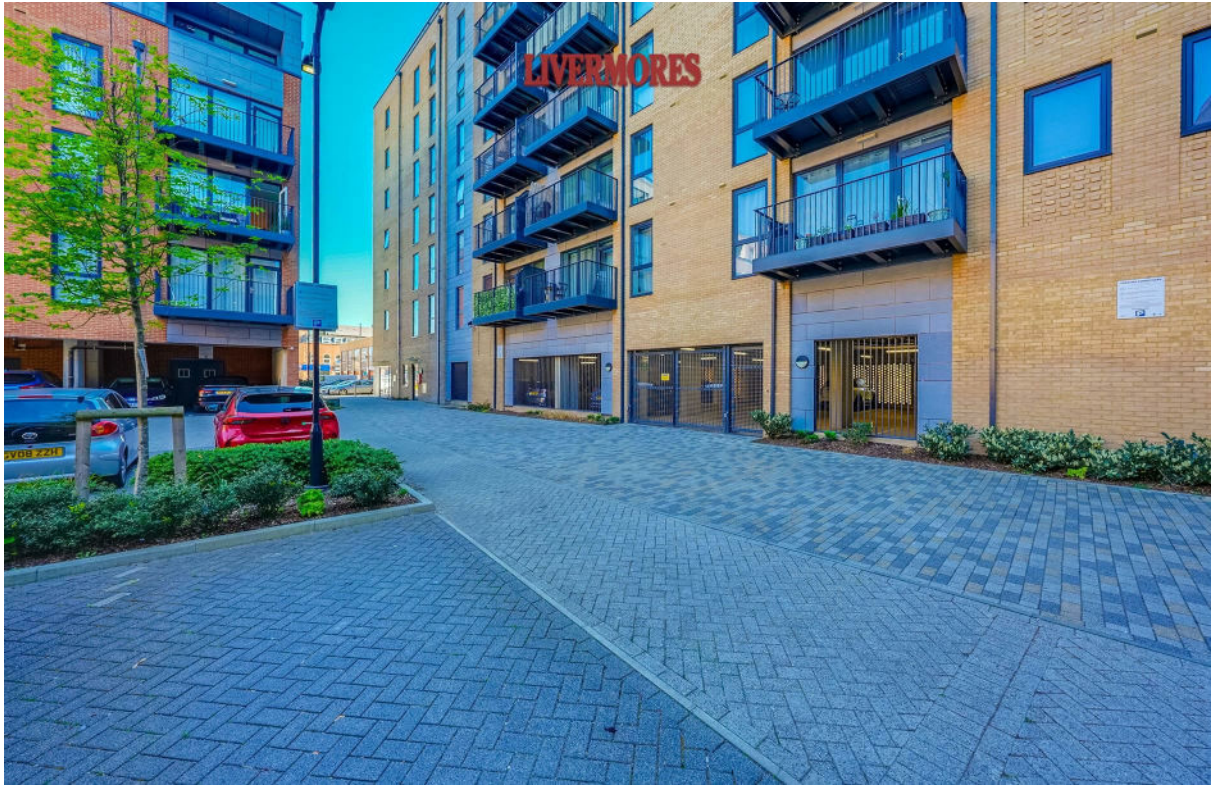


www.livermores.co.uk



113 Brewers Square

Dartford DA1 1BF



Nestled in the desirable Brewers Square, Dartford, this exquisite first-floor flat presents an exceptional opportunity for those seeking a modern and stylish home. With two well-proportioned bedrooms and two bathrooms, this property is designed to cater to both comfort and convenience.

The spacious living area is perfect for entertaining guests or simply relaxing after a long day. One of the standout features of this apartment is the private balcony, an ideal spot to savour your morning coffee or unwind while watching the sunset. The flat is beautifully decorated throughout, allowing you to move in without the need for any immediate renovations.

Residents will appreciate the added benefit of designated parking for one vehicle, providing peace of mind in this bustling area. This purpose-built development is particularly appealing to first-time buyers, given its proximity to Dartford Station and a variety of local amenities, making daily commutes and errands effortless.

Moreover, the location is a stone's throw from Central Park, a vibrant community hub that hosts annual events and offers a lovely space for exercise and leisurely strolls. This property truly embodies the perfect blend of modern living and community spirit, making it an ideal choice for anyone looking to settle in Dartford. Don't miss the chance to make this stunning apartment your new home.



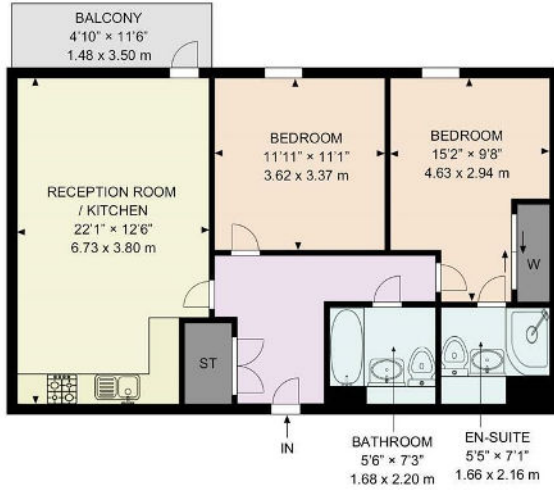
113 Brewers Square

£330,000 Leasehold



- GUIDE PRICE £330,000 - £340,000
- LARGE OPEN KITCHEN-DINING/LOUNGE SPACE
- PRIVATE BALCONY SPACE
- WALKING DISTANCE FROM DARTFORD STATION & TOWN CENTRE
- SIMILAR PROPERTIES REQUIRED
- TWO BEDROOM FIRST FLOOR APARTMENT
- OFF-STREET PARKING
- SOUGHT-AFTER BREWERS SQUARE DEVELOPMENT
- EN-SUITE & FAMILY BATHROOM
- COUNCIL TAX BAND 'D', EPC RATING 'B'





BREWERS SQ DA1

The plan is intended solely as a layout guide, and no liability is assumed for any errors, omissions, or inaccuracies. It does not constitute, in whole or in part, an offer or contract. Any intending purchaser or lessee should satisfy themselves, through inspection searches, enquiries, and a full survey, as to the accuracy of the information provided. All areas, measurements, wall thicknesses, shapes, compass bearing, and distances are approximate and should not be relied upon for valuation purposes or as the basis of any sale or letting. No guarantee is provided regarding the total area. All measurements are taken at the widest points, internally, with the first measurement referring to the vertical dimension. May not be to scale. Powered by airvideography.com

Council Tax Band D
Local Authority DARTFORD

Agents Note: Whilst every care has been taken to prepare these particulars, they are for guidance purposes only. All measurements are approximate and are for general guidance purposes only and whilst every care has been taken to ensure their accuracy, they should not be relied upon and potential buyers/tenants are advised to recheck the measurements.

Energy Efficiency Rating		CUBIC M	144 m ³
Very energy efficient - lowest running costs			
(92 plus) A			
(81-91) B			
(69-80) C			
(55-68) D			
(39-54) E			
(21-38) F			
(1-20) G			
Not energy efficient - higher running costs			
England & Wales		EU Directive 2002/91/EC	

1 Hythe Street
Dartford
Kent
DA1 1BE



dartford@livermores.co.uk
01322 228090
www.livermores.co.uk